



Rhode Island Marine Fisheries Council

3 Fort Wetherill Road Jamestown, Rhode Island 02835
(401) 423-1920 Fax: (401) 423-1925

Meeting Notice SHELLFISH ADVISORY PANEL (SAP)

Wednesday October 6, 2021, 4:30PM

In person:
URI Bay Campus/GSO
Coastal Institute Auditorium

Face masks required for all in attendance!

Zoom webinar:
<https://us02web.zoom.us/j/83835729020>
Meeting ID: 838 3572 9020
Dial in: 1-929-205-6099 (listen only)

AGENDA

Agenda item	Recommended action(s)	ePacket Attachment(s)/links
1. Shellfish harvest schedules for Greenwich Bay, Bissel Cove/Fox Is., and Bristol Harbor Shellfish Management Areas	FYI and/or provide recommendation to the RI Marine Fisheries Council	<ul style="list-style-type: none"> Current harvest schedules (Part 4 – Shellfish: sections 4.12.2(A), 4.12.2(E), and 4.12.2(G)) Slides
2. Providence River 2021 Summary	FYI only or recommendation to the RI Marine Fisheries Council	N/A
3. Any Other Matters	FYI only or recommendation for future action	N/A
4. Adjourn		

To join by phone (listen only), call: 1-929-205-6099; meeting ID: 838 3572 9020; participant ID: Provided once you log onto webinar. If joining by phone, simply wait on the line to be connected on the phone.

All RIMFC Species Advisory Panel meetings are open to the public.
For more information please contact Anna Gerber-Williams at (401) 423-1930;
anna.gerberwilliams@dem.ri.gov.

Posted to Sec. of State Open Meetings pursuant to R.I. Gen. Laws § 42-46-6

Panel Chair:

Katie Eagan

Scientific Advisor:

Michael Rice

Membership:

Brennan Bica
Comm. Fishing & Dealer

Dennis Erkan
Recreational Shellfish

Jeff Gardner
Aquaculture

David Ghigliotty
Comm. Bullrake

Bob Rheault
Alternate for J. Gardner

John McDonald
Comm. Shellfishing

Mike McGiveney
Comm. Bullrake

Kenneth Murgo
Comm. Shellfishing

Richard Pastore
Recreational Rod & Reel

Gerald Schey
Comm. Bullrake

Bob Smith
Dealer

Manuel Sousa
Comm. Bullrake

Chris Sperry
Recreational Shellfish

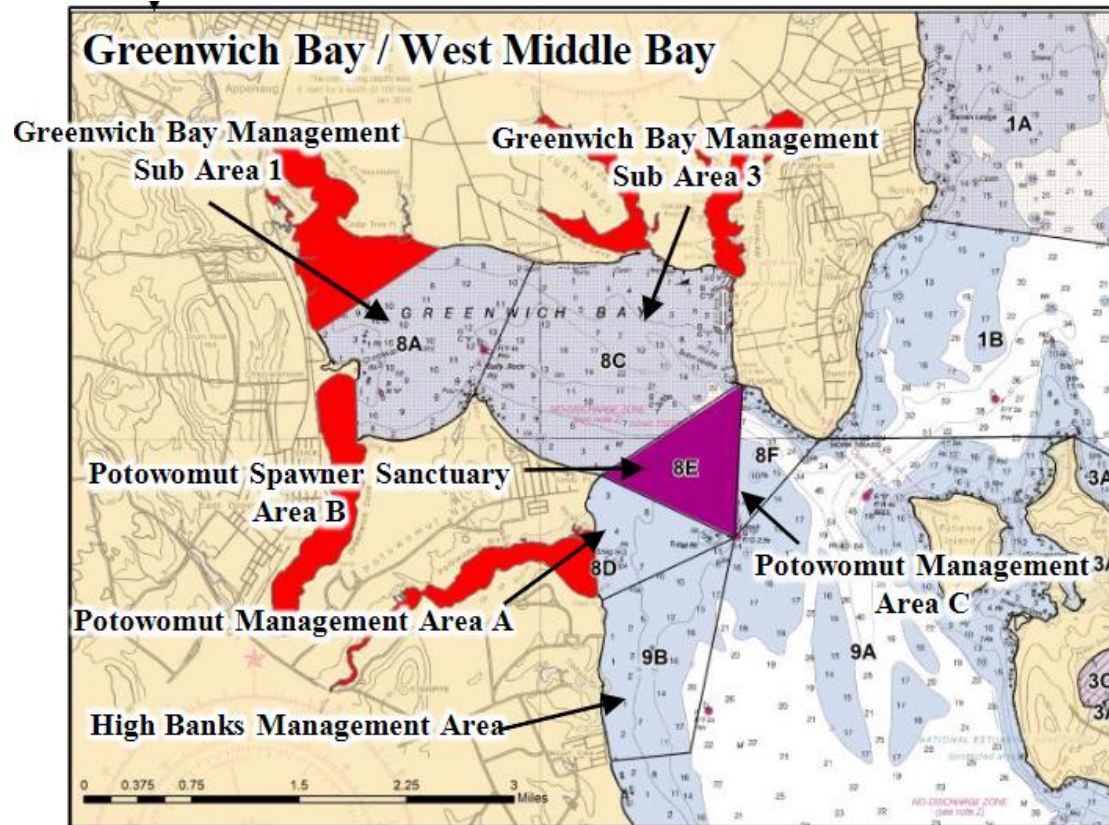
Roger Tellier
Recreational Rod & Reel

Edward Troiano
Recreational Shellfish

Marine Fisheries staff:

Anna Gerber-Williams

4. Discussion on Winter Harvest Schedule for Shellfish Management Area: Greenwich Bay Sub Area 1



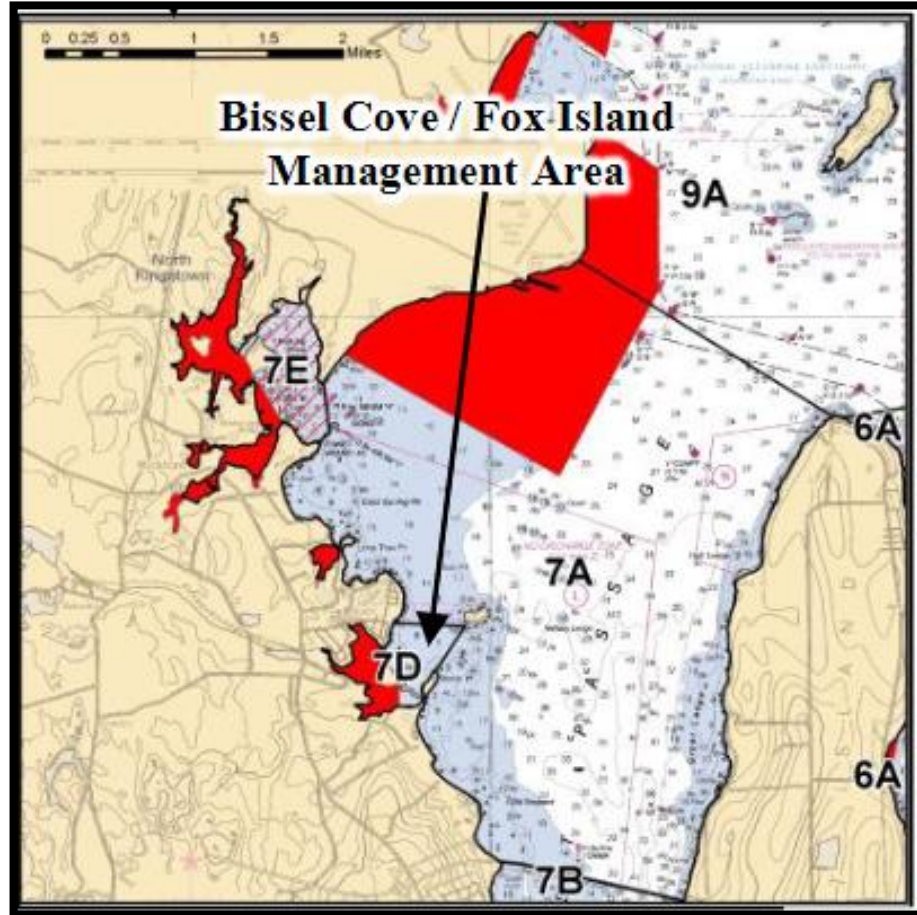
Provisions for Proposal

The schedule for the month of December may include up to 48 hours of permitted shellfishing, spread over any number of days during the month, excluding December 25.

Default

Open 8:00A.M. to 12:00P.M. noon on Mondays, Wednesdays, and Fridays, beginning on the second Wednesday of December (8th) and continuing through the last Friday in April (29th), excluding December 25 and January 1 annually.

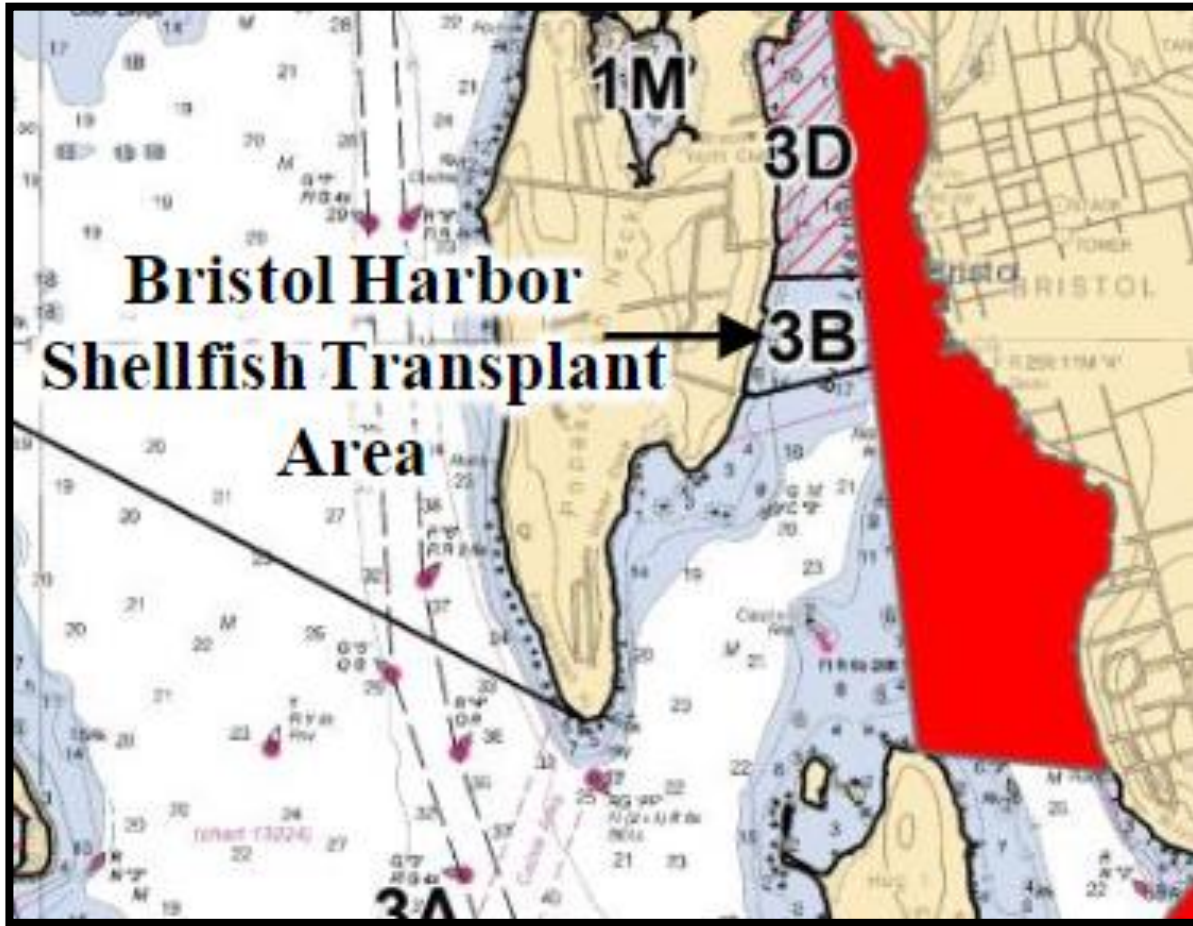
4. Discussion on Winter Harvest Schedule for Shellfish Management Areas: Bissel Cove



Default

Open 8:00A.M. to 12:00P.M. noon on Mondays, Wednesdays, and Fridays, beginning on the second Wednesday of December and continuing through the end of April, excluding December 25 and January 1 annually.

4. Discussion on Winter Harvest Schedule for Shellfish Management Areas: Bristol Harbor



Default

- Open 8:00A.M. to 12:00P.M. noon on Mondays, Wednesdays, and Fridays, beginning on January 2 and continuing through January 31.
- Open daily February 1 through April 30.
- Closed May 1 through January 1.