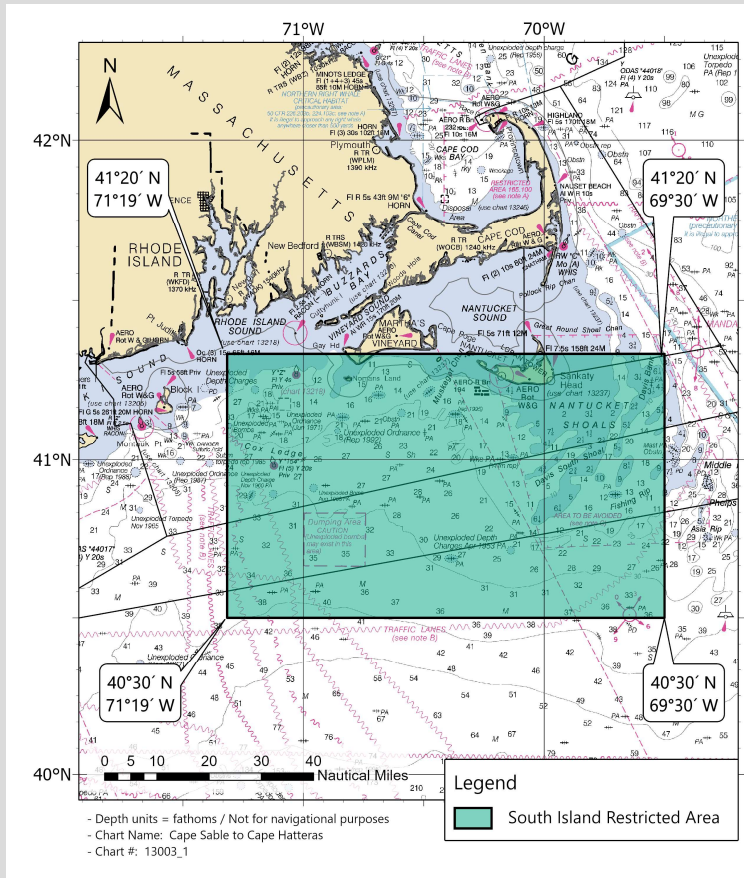


# NOTICE: CHANGES FOR LOBSTER AND JONAH CRAB FISHERIES

The following changes have been made to the Atlantic Large Whale Take Reduction Plan as of August 2021. The modifications highlighted here are specific to Rhode Island harvesters fishing in LCMAs 2 and 3. For the full suite of regulatory changes, please visit [fisheries.noaa.gov/alwtrp](https://fisheries.noaa.gov/alwtrp) or contact NOAA or RIDEM staff listed below.

## CHANGES TO LOBSTER AND JONAH CRAB TRAP/POT CLOSURE AREAS EFFECTIVE OCTOBER 18, 2021



**South Island Restricted Area**, closed from February through April, restricts trap/pot fishing that uses persistent (traditional) buoy lines. Fishermen must obtain authorization from the state (if in state waters) and Exempted Fishing Permits from NOAA to be exempt from other federal regulations requiring buoy lines before using ropeless gear.

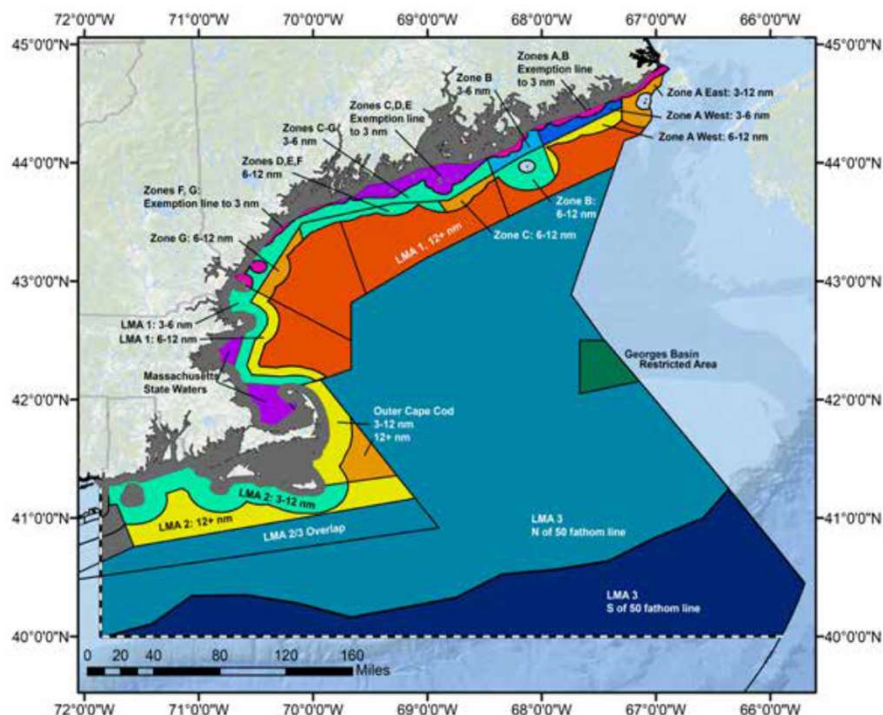
<b>South Island Restricted Area:</b>	
Closed to buoy lines February-April	
Longitude	Latitude
-71° 19.00' W	41° 20.00' N
-69° 30.00' W	41° 20.00' N
-69° 30.00' W	40° 30.00' N
-71° 19.00' W	40° 30.00' N

For list of all lobster/Jonah crab restricted areas, please refer to [fisheries.noaa.gov/alwtrp](https://fisheries.noaa.gov/alwtrp)

## CHANGES TO THE MINIMUM NUMBER OF TRAPS PER TRAWL

Area	Minimum Traps/Trawl
State Waters	No Minimum
LMA 2	
LMA 2 (3-12 miles)	10 (status quo)
LMA 2 (12+ miles)	15 (status quo)
LMA 3*	
N of 50 fa. line on the south end of Georges Bank	45
S of 50 fa. line on the south end of Georges Bank	35
Georges Bank Restricted Area	50

\*In LMA 3, max. trawl length is increased from 1.5 to 1.75 nm



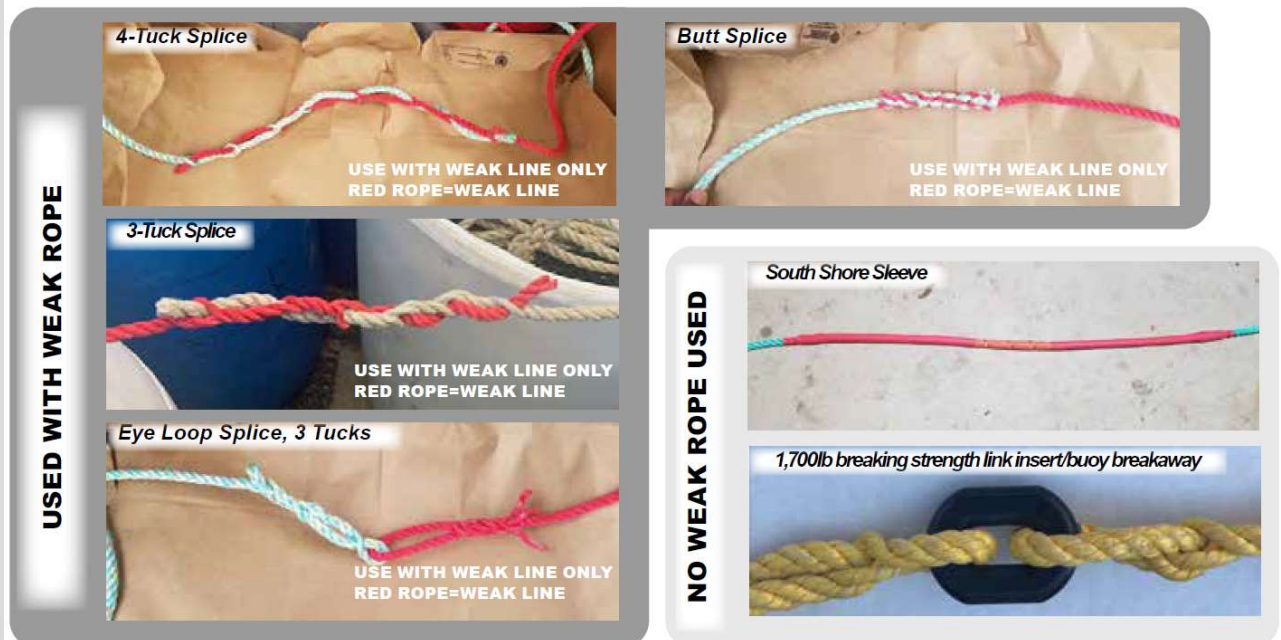
# CHANGES TO LOBSTER AND JONAH CRAB TRAP/POT WEAK INSERTS

EFFECTIVE MAY 1, 2022

The 2021 rule removes the requirement for weak link at buoys and other surface system flotation devices (though they may still be used voluntarily) and adds requirements for weak rope or insertions within the buoy line. A guide to currently approved line and insert types may be found at: <https://www.fisheries.noaa.gov/new-england-mid-atlantic/marine-mammal-protection/approved-weak-inserts-and-line-atlantic-large>

Area	Weak Insertion Requirements
MA State Waters	Weak inserts every 60 feet OR full weak line in the top 75% of line
RI State Waters	
LMA 2	
LMA 3	Top 75% of one buoy line is full weak line. Bottom 25% can be higher strength.

## EXAMPLES OF WEAK INSERT RIGGING METHODS



\*Full weak vertical lines are currently being developed and tested for acceptance as a compliant measure for this section of the Plan.

## CHANGES TO GEAR MARKING REQUIREMENTS

### NEW REQUIREMENTS FOR FEDERALLY PERMITTED VESSELS (Federal and State waters)

AREA COLOR IS BASED ON PERMIT'S PRINCIPAL PORT  
(NON-LMA 3) OR LMA 3 PERMIT.

#### Rhode Island

One 3-foot **SILVER/GRAY** color mark within 2 fathoms of buoy; and  
One 12-inch **SILVER/GRAY** mark at the top of the buoy line below the surface system; and  
One 12-inch **SILVER/GRAY** mark in the middle of buoy line; and  
One 12-inch **SILVER/GRAY** mark at the bottom of the buoy line; and  
Four 12-inch **GREEN** marks, each within 6 inches of a **SILVER/GRAY** mark.

#### LMA 3

One 3-foot long **BLACK** mark within 2 fathoms of the buoy line; and  
One 12-inch **BLACK** mark at the top of the buoy line below the surface system; and  
One 12-inch **BLACK** mark in the middle of buoy line; and  
One 12-inch **BLACK** mark at the bottom of the buoy line; and  
Four 12-inch **GREEN** marks, each within 6-inches of a **BLACK** mark.

### NEW REQUIREMENTS FOR VESSELS WITH STATE-ONLY PERMITS

#### Rhode Island

One 3-foot **SILVER/GRAY** mark within 2 fathoms of buoy; and  
One 12-inch **SILVER/GRAY** mark in top 50% of buoy line; and  
One 12-inch **SILVER/GRAY** mark in bottom 50% of buoy line.

Website: [fisheries.noaa.gov/alwtrp](https://www.fisheries.noaa.gov/alwtrp)

#### Greater Atlantic Fisheries Office

Marisa Trego, Take Reduction Team Coordinator:  
(978) 282-8484, [marisa.trego@noaa.gov](mailto:marisa.trego@noaa.gov)  
John Higgins, Northeast Fisheries Liaison:  
(207) 610-3282, [john.higgins@noaa.gov](mailto:john.higgins@noaa.gov)  
Rob Martin, Northeast Gear Specialist:  
(617) 710-6322, [Robert.martin@noaa.gov](mailto:Robert.martin@noaa.gov)

#### Rhode Island DEM Division of Marine Fisheries

Scott Olszewski, Deputy Chief:  
(401) 423-1934, [scott.olszewski@dem.ri.gov](mailto:scott.olszewski@dem.ri.gov)

Contacts