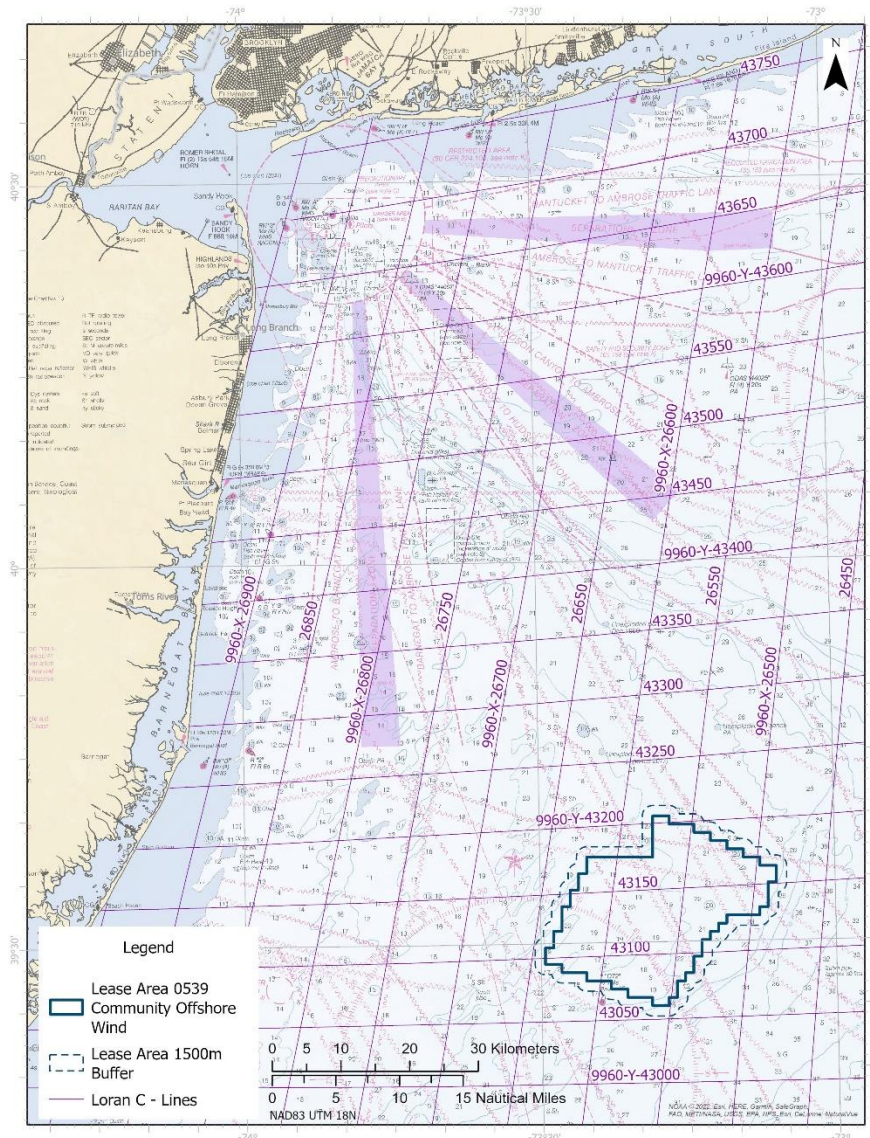


OFFSHORE SURVEY WORK SEAWARD OF NEW JERSEY



Overview of Lease Area 0539 (Community Offshore Wind)

Community Offshore Wind will commence High Resolution Geophysical surveys of the lease area and associated 1500-meter buffer on or around December 9, 2022 through August 31, 2023. This is the first phase of an initial survey campaign focused on characterizing the seabed, refining knowledge of bottom features or obstructions, and locating areas of archeological interest. Survey work for this first phase will include multibeam bathymetry, side scan sonar imaging, magnetic measurements, and sub-bottom profiling. All work has been approved by and will comply with federal requirements from the Bureau of Ocean Energy Management.

The lease area is located 32 nautical miles east of Barnegat Inlet, NJ and 56 nautical miles south of Long Beach, NY. Offshore, it is positioned east of the Star Slough and just south of the CORVALLIS wreck.

CONTACTS

Deirdre Boelke, Fisheries Liaison
Cell: 978.518.0638

DeirdreB@communityoffshorewind.com

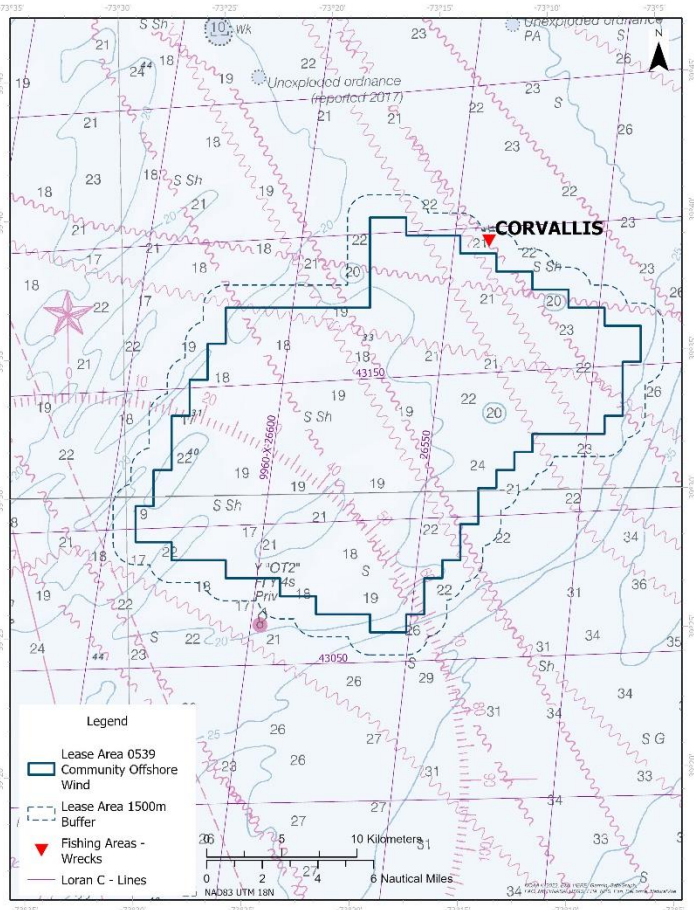
Michelle Duval, Fisheries Liaison
Cell: 919.601.3798

MichelleD@communityoffshorewind.com

COMMUNITY OFFSHORE WIND FISHERIES NOTICE

Mariners transiting and operating offshore between Little Egg Inlet, NJ and Fire Island, NY are encouraged to note the survey area locations, activities, and timing. Fishermen fishing mobile gear or deploying tended, fixed fishing gear in survey areas when survey vessels are present are requested to coordinate operations through direct bridge-to-bridge communications with survey vessels. Fishermen are requested to remove any unattended fixed fishing gear from survey areas during survey periods to avoid loss or damage to fishing gear or survey equipment. Fishermen planning to fish fixed gear in the survey area are encouraged to contact Fisheries Liaisons Deirdre Boelke or Michelle Duval to coordinate activities in advance. Updated fisheries notices will be posted to reflect any changes in the timing of survey vessel operations.

Two 170-foot vessels, the GO PURSUIT and GO DISCOVERY, will survey the lease area. The vessels will be towing survey equipment astern and request a 0.5 nautical mile closest point of approach. Survey vessels will monitor VHF channel 16. A local commercial fishing vessel will scout the area for fishing gear before survey operations begin.



M/V GO DISCOVERY

Vessel Flag: USA
Call sign: WDK4727
MMSI: 368058130
Bridge phone: (+1) 337-706-5602
Email: godiscovery@guiceoffshore.com
VHF: Channel 16



R/V GO PURSUIT

Vessel Flag: USA
Call sign: WDH6498
MMSI: 367191410
Bridge phone: (+1) 337-205-7400
Email: gopursuit@guiceoffshore.com
VHF: Channel 16

For additional information and updates, please visit communityoffshorewind.com/fisheries.