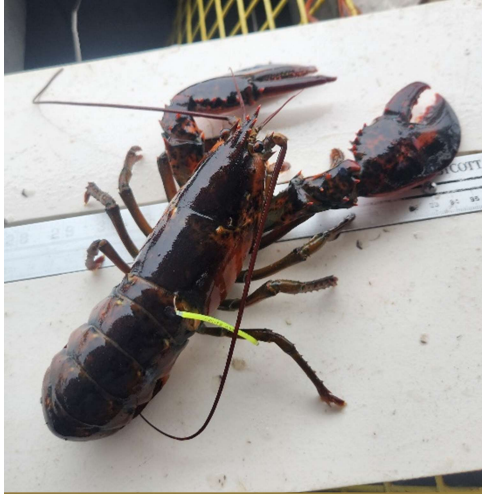


FOUND A TAGGED LOBSTER?

If you find a lobster with a **yellow** t-bar tag marked with "RIDEM", please:

Text* or Call (401) 484-0257 or email aremick.dem.ri@gmail.com

**If you call, please leave a voicemail*



Rhode Island DEM's Division of Marine Fisheries is tagging lobsters to study movement between inshore and offshore areas, and to understand how growth and movement may have responded to environmental changes.

WHAT TO REPORT: **Date, location, tag #,** and whether you **kept or released** the animal. Please also report **carapace length** in millimeters, if you can, and report whether females are carrying eggs. Include your contact information if you are okay with project staff reaching out with questions.



Thank you for supporting this important research. Feel free to contact us with any questions.